



What should I know already?

The seven continents and the five oceans of the world.
The location of some countries including the UK and France.
What climate means and how it affects the vegetation in that area.

In Things I need to know

A **volcano** is a deep hole in the Earth's top **layer** that can let out hot gases, ash and lava. Many **volcanoes** are also **mountains**.

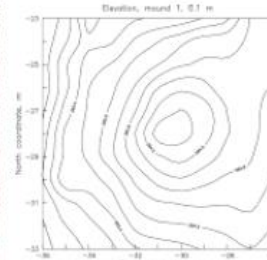
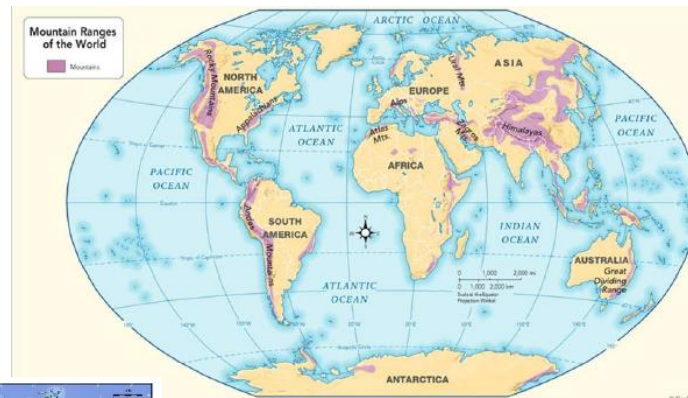
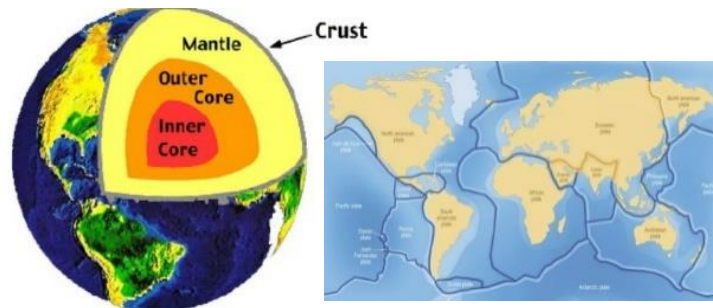
Volcanoes have long **vents** that go all the way down through the Earth's first **layer**, the **crust**, to **magma** in between the **crust** and the **mantle** (the Earth's second layer). It's so hot there that rocks **melt** into liquid. This is called magma, which travels up through **volcanoes** and flows out as **lava**.

There are three ways to describe a **volcano** and explain what it's doing- **active**, **erupting** and **dormant**.

When a **volcano erupts**, **magma** comes up and out through the **vents**. **Magma** is called **lava** when it's outside the **volcano**. There are no **volcanoes** in the UK. The largest **volcano** in Europe is Mount Etna in Sicily (Italy).

Diagrams

The **Earth** has three **layers** – the **crust** at the very top, then the **mantle**, then the **core** at the very middle of the planet.
The **Earth's crust** is made up of huge slabs called **tectonic plates**, which fit together like a jigsaw puzzle.
These **tectonic plates** slowly move over a long period of time.



Vocabulary

- Active** - An **active volcano** has erupted or is expected to erupt quite soon.
- Core** – The central part of the earth, beneath the **mantle**.
- Crust** – The Earth's **crust** is its outer **layer**.
- Dormant** – Not **active** but is capable of becoming active later on.
- Earthquake** – A shaking of the ground caused by movement of the Earth's **crust**.
- Erupt** – When a **volcano erupts**, it throws out a lot of hot, melted rock called **lava**, as well as ash and steam.
- Fault lines** – A long crack in the surface of the earth.
- Form** – Move or arrange.
- Gas** – Something that is neither liquid or solid. A gas rapidly spreads out when it is warmed and contracts when it is cooled.
- Lava** – The very hot liquid rock that comes out of a **volcano**.
- Layers** – If something has many layers, it has many different levels or parts.
- Magma** – Molten rock that is formed in very hot conditions inside the earth.
- Mantle** – The part of the earth between the crust and the core.
- Molten** – Molten rock, metal or glass has been heated to a very high temperature and has become a hot, thick liquid.
- Mountain** – A very high area of land with steep sides.
- Peak** – The highest point of a mountain, also known as a summit.
- Range (mountains)** – A **range of mountains** or hills is a line of them.
- Summit** – The highest point of a **mountain**, also known as a **peak**.
- Tectonic plates** – Any of the several segments of the earth's **crust** that move.
- Vent** – The part of a volcano through which **lava** and **gases** erupt.
- Volcano** – A **mountain** from which hot melted rock, **gas**, steam and ash from inside the **Earth** sometimes burst.

--	--	--

St Luke's C of E Primary School – Knowledge Organiser		
	Year	Subject: History
		Topic:

What should I know already?	Diagrams	Vocabulary
Things I need to know	Timeline	People and Places



St Luke's C of E Primary School – Knowledge Organiser

Year

Subject: Science

Topic:

What should I know already?

Diagrams

Vocabulary

Things I need to know

--	--	--	--