

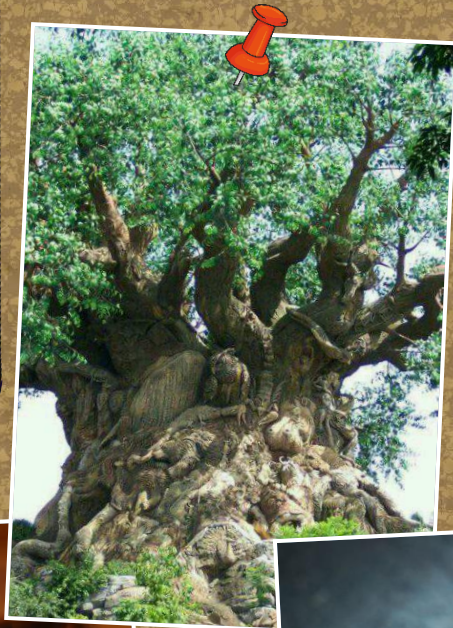


Wednesday 3rd
February 2021

Can I use similes
and metaphors to
add description?

Warm up

Can you think
of
any similes
for
the pictures?



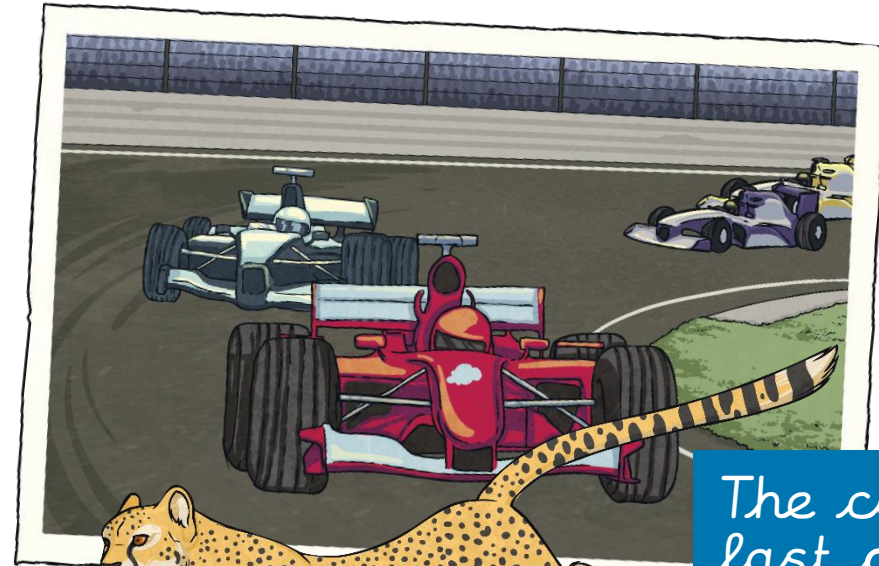
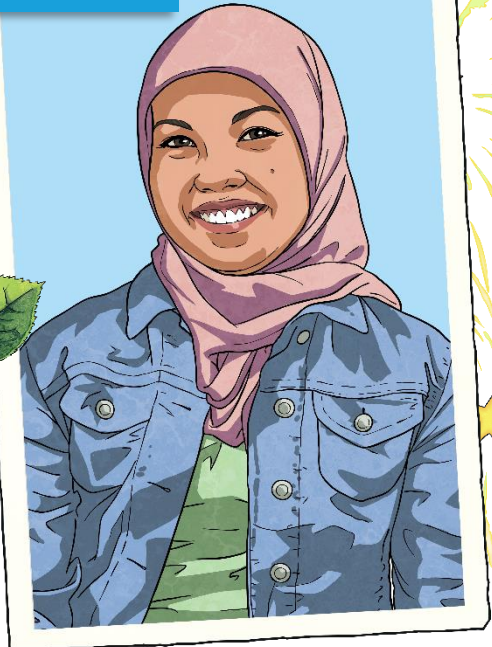
Can you think
of
any adjectives
to describe the
pictures?



What is a Simile?

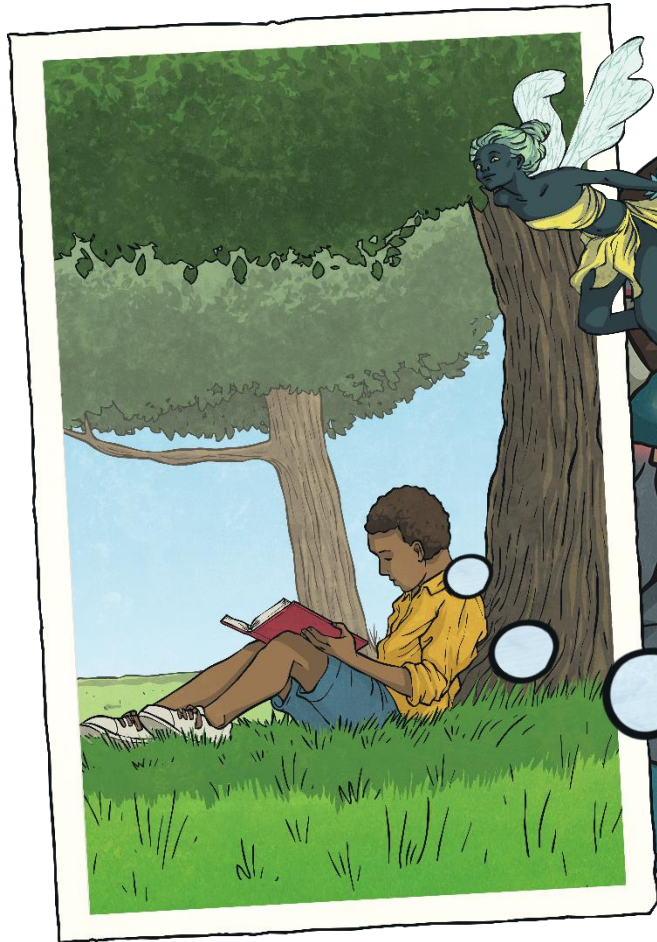
A simile is a way of describing something by comparing it to something else using 'like' or 'as'.

Her eyes are like stars and her lips are like roses.



The car was as fast as a cheetah.

Why do we use similes and adjectives?



When you are describing something, you are trying to create a picture in the reader's mind. Similes can help you to do this.

They are most often used in **stories and poems.**



See how it works



**The dog was big
and fierce.**

Now if we add adjectives
and similes...

The black, scruffy dog was as big as a wolf
and fierce like a very angry bear.

Isn't that better?



The house was beautiful.
Now if we add adjectives
and similes...

The ancient house was beautiful like
an old fashioned painting.



*Now write
complete these
ones in your
English/Green
book.*

As fast as a...

As bright as a...

As loud as a...

As soft as...

.... like a....

What is a Metaphor?

Figurative - using or containing a non-literal sense of a word or words.

Metaphor is the device that compares something directly with something else in order to create a resemblance.

Resemblance - similar in appearance or quality to somebody or something else.

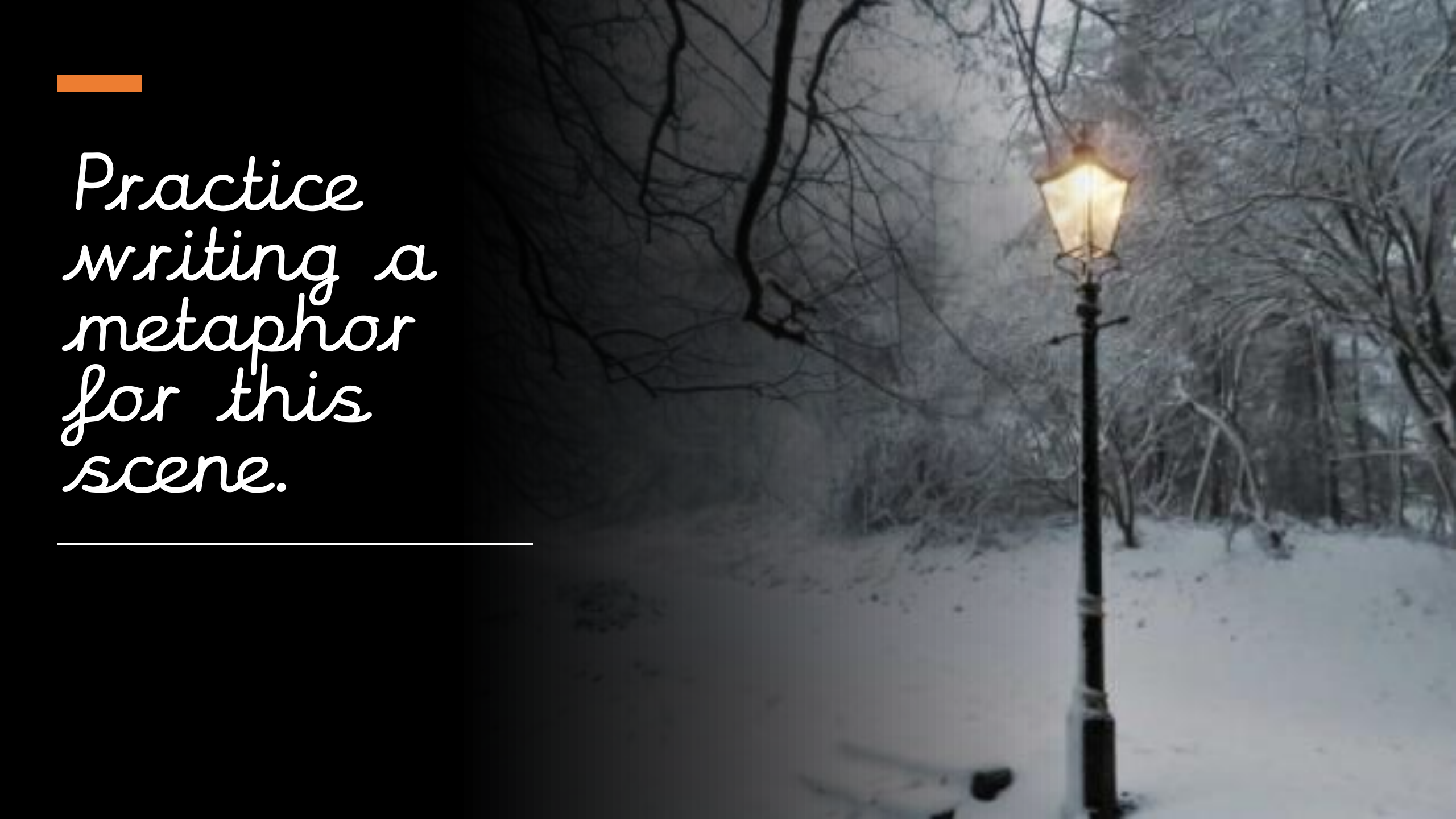
How to use a metaphor

“The moon was a ghostly galleon, tossed upon cloudy seas.”
‘The Highwayman’, Alfred Noyes.



We know that a ship can't be a ghost, but using this metaphor forms the eerie image that Alfred Noyes wanted to create for the reader.

Image - a picture of something.

A photograph of a snowy winter scene. A single street lamp stands on the right side, its light glowing warmly against the cold, blue-toned background. The ground is covered in a thick layer of snow, and the trees in the background are bare and heavily laden with snow. The overall atmosphere is quiet and serene.

Practice
writing a
metaphor
for this
scene.

Complete the metaphors, they are all in a muddle!

Write them correctly in your book.

The moon

journey.

Life is a

is a white balloon.

My pulse is

jagged knives.

The rocks are

racing.

The train lines are

tip.

The room is a

snakes.